

Autonomous Research & Surveying Platform

MC6000

MC6000 is a fully customizable robotic vessel designed for scientific discovery. Its open, modular platform supports seamless integration of sensors and equipment, enabling diverse research applications. MC6000 adapts to a range of tasks, providing a valuable tool for environmental monitoring, marine exploration, and data collection in remote waters.

www.mindchip.ee/mc6000

Phone: +372 5264 992

e-mail: info@mindchip.ee



Technical Specifications

Length: 6.2 m

Breadth: 2.5 m

Draught: 0.4 m

Operational speed: 5 kn (9 km/h)

Connectivity: 4G, 433 MHz, WIFI, AIS, VHF, satellite

Sensors: radar, camera, magnetometer,
anemometer, gyroscope, depth finder



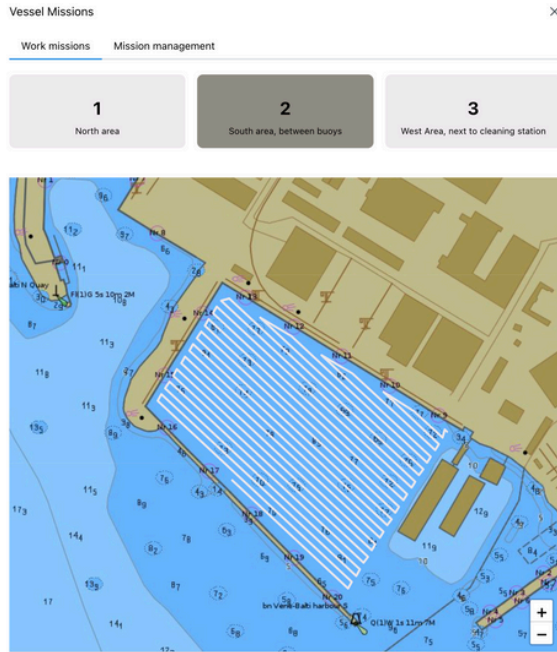
MindChip

Environmental Monitoring and Marine Research

MC6000 is an ideal platform for seabed exploration and environmental studies, offering robust support for monitoring ecological changes. It is designed for challenging offshore regions, where reliable autonomous solutions are essential.

Autonomous Working Cycle

Operating fully autonomously along a predefined missions, MC6000 continuously collects and monitors data, ensuring optimal performance with minimal human intervention.



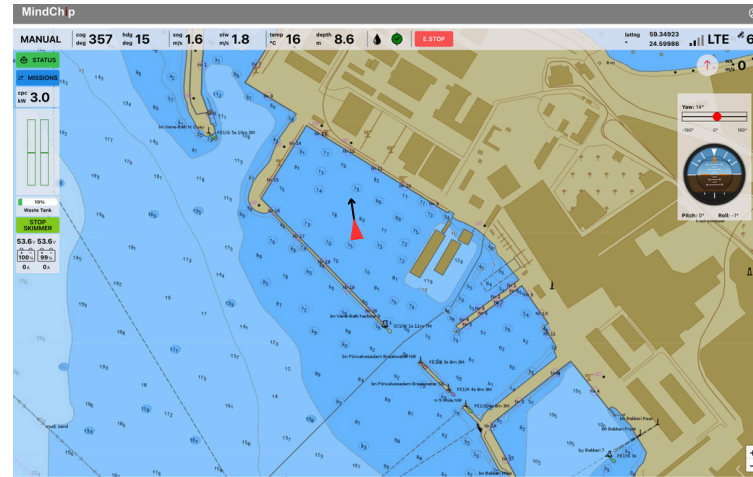
Mission Management

Plan, schedule, and manage missions with an intuitive interface. Customize routes, set precise timings, and scale to meet varying operational needs.

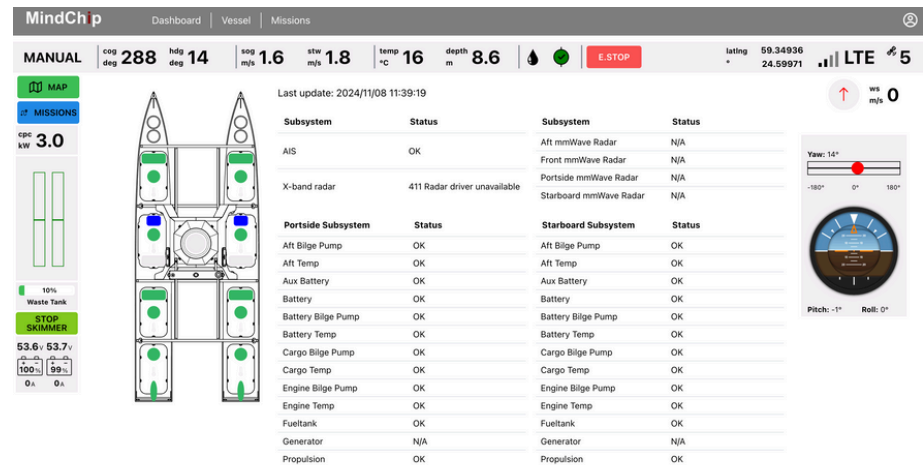
Web-Based Control Station

Access the vessel remotely for mission management and monitoring, with a detailed map view of its location, path, and surroundings. Real-time telemetry and HD video streams offer a comprehensive, live overview of vessel status.

www.mindchip.ee/mc6000



MindChip



Operator View

Gain full access to vessel telemetry data, with the flexibility to switch between autonomous and manual modes. Maintain complete situational awareness with alerts for course changes and system malfunctions, ensuring safe and efficient operations.